

**ONCOLOGY NURSING:
A REVIEW FOR
CERTIFICATION EXAM AND
CLINICAL UPDATE**

MAY 4TH, 2024



OCN REVIEW AND CLINICAL UPDATES

“This continuing nursing education activity was approved by the Northeast Multistate Division, an accredited approver by the American Nurses Credentialing Center’s Commission on Accreditation”

8.0 contact hours will be awarded to nurses who attend the program in its entirety and complete a program evaluation

DISCLOSURES

No presenters have anything to disclose.



OBJECTIVES

- Overview of OCN Test Blueprint
- Develop your Plan & Gather your Resources
- Day of Test Success
- Multiple Choice Questions – How to break them down and find the best answer

2022 OCN TEST BLUEPRINT



Oncology Nursing
Certification Corporation

2022 OCN® Test Content Outline

- I. **Care Continuum - 19%**
- II. **Oncology Nursing Practice - 17%**
- III. **Treatment Modalities - 19%**
- IV. **Symptom Management and Palliative Care - 21%**
- V. **Oncologic Emergencies – 12%**
- VI. **Psychosocial Dimensions of Care - 12%**

- The OCN® Test Content Outline includes six major subject areas, each with a percentage assigned to it. Many nurses who have passed the test tell us the Test Content Outline was essential in helping them know what areas to study. Remember, only generic drug names are used on ONCC tests.

DEVELOP YOUR PLAN & GATHER YOUR RESOURCES



- Resources for success
 - Prep Courses
 - Study Guides
 - Practice Tests
- Don't cram and don't push off the exam
- Test is 3-hours & 165 multiple-choice questions
- Consider successful studying methods for you
- Schedule study times (on own or with partner)
- Start studying 3-6 months before you plan to test
- Review Test Content Outline to determine areas where you need to focus

MULTIPLE CHOICE QUESTIONS

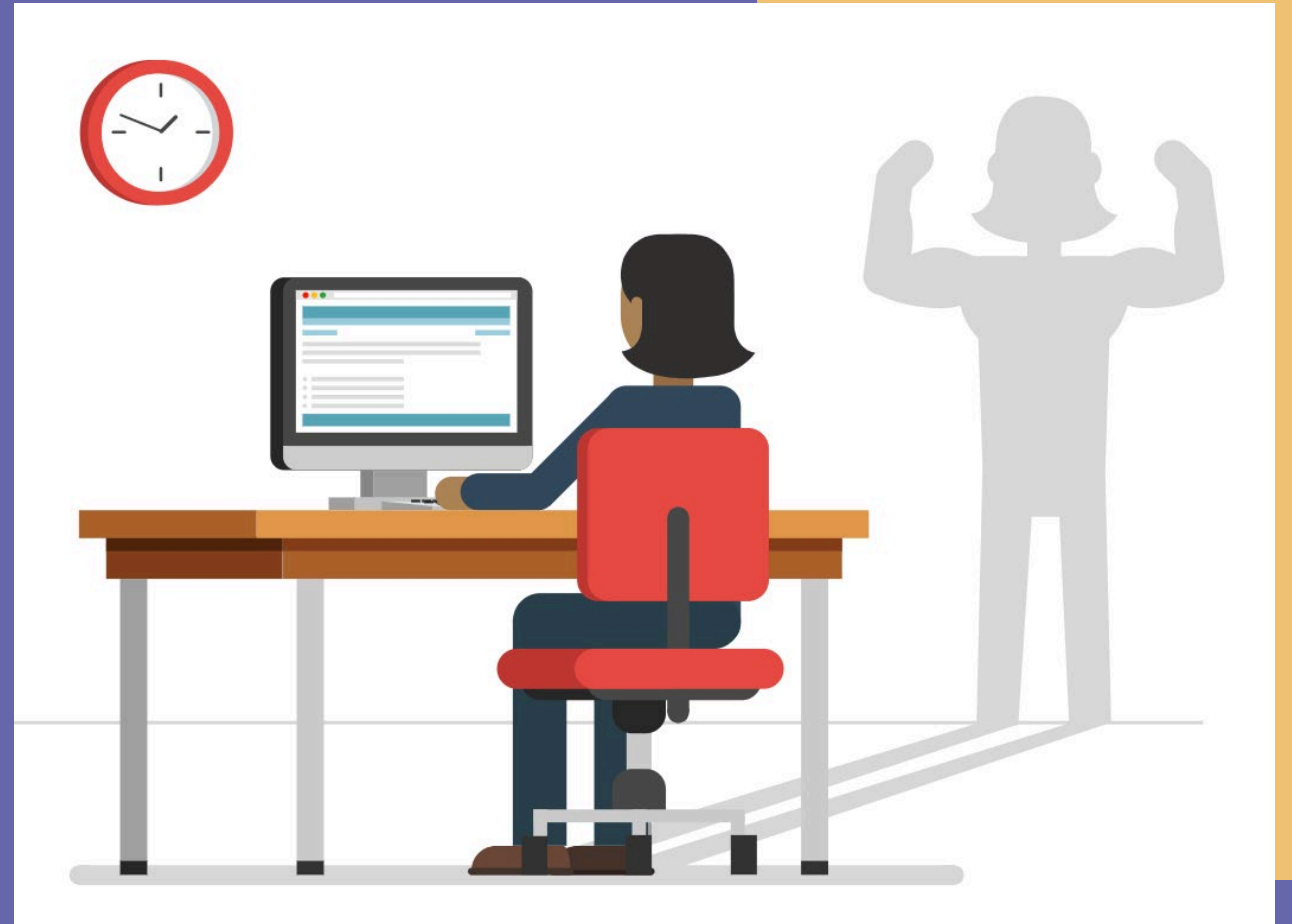
- Read question slowly and completely
- Before reading choices, think of what might the answer be
- Eliminate incorrect options

- The look for:
 - Correct Answer
 - Distractors



DAY OF TEST SUCCESS

- Eat properly
- Get to bed early
- Take some time for self (no cramming)
- Review location of test & what to bring
- Don't second guess
- Trust in your knowledge
- Celebrate!



BREAKING DOWN THE QUESTION

What matters most?

What risks factors are present?

Which problem should be addressed first?

What will happen if I do nothing?

Is more information needed?

What would the impact of this intervention be?

Breaking Down The Question

A patient with breast cancer completed radiation therapy one month ago, and is reporting gradual, moderate dyspnea with a nonproductive cough. A chest x-ray reveals patchy consolidation, most likely representing which of the following?

Breaking Down The Question

A patient with breast cancer completed radiation therapy one month ago, and is reporting gradual, moderate dyspnea with a nonproductive cough. A chest x-ray reveals patchy consolidation, most likely representing which of the following?

Working Through the Answers

A patient with breast cancer completed radiation therapy one month ago, and is reporting gradual, moderate dyspnea with a nonproductive cough. A chest x-ray reveals patchy consolidation, most likely representing which of the following?

- A. Pericarditis
- B. Secondary Malignancy
- C. Pneumonitis
- D. Rib fracture

Working Through the Answers

A patient with breast cancer completed radiation therapy one month ago, and is reporting gradual, moderate dyspnea with a nonproductive cough. A chest x-ray reveals patchy consolidation, most likely representing which of the following?

- ~~A. Pericarditis~~
- ~~B. Secondary Malignancy~~
- C. Pneumonitis
- ~~D. Rib fracture~~

Practice Question #1

Which one of the following medications is used to prevent sinusoidal obstruction syndrome (SOS)?

- A. Ursodiol
- B. Lovenox
- C. Pantoprazole
- D. Bactrim DS

Practice Question #1

Which one of the following medications is used to prevent sinusoidal obstruction syndrome (SOS)?

- A. Ursodiol
- B. ~~Lovenox~~
- C. ~~Pantoprazole~~
- D. ~~Bactrim DS~~

Practice Question #2

Which of the following would the nurse expect to observe in a patient with typhlitis?

- A. Urinary frequency
- B. Neurologic changes
- C. Respiratory distress
- D. Abdominal pain

Practice Question #2

Which of the following would the nurse expect to observe in a patient with typhlitis?

- ~~A. Urinary frequency~~
- ~~B. Neurologic changes~~
- ~~C. Respiratory distress~~
- D. Abdominal pain

Practice Question #3

Which of the following data would be pertinent to a patient receiving cisplatin (Platinol)?

- A. CBC, platelets, BUN, creatinine
- B. CBC, urinalysis, alkaline phosphatase
- C. CBC, electrocardiogram, urinalysis
- D. CBC, urinalysis, uric acid

Practice Question #3

Which of the following data would be pertinent to a patient receiving cisplatin (Platinol)?

- A. CBC, platelets, BUN, creatinine
- ~~B. CBC, urinalysis, alkaline phosphatase~~
- ~~C. CBC, electrocardiogram, urinalysis~~
- ~~D. CBC, urinalysis, uric acid~~

Practice Question #4

Which of the following is considered a risk factor for developing a hypersensitivity reaction?

- A. Male gender
- B. No known medication allergies
- C. First exposure to a medication
- D. Intravenous route

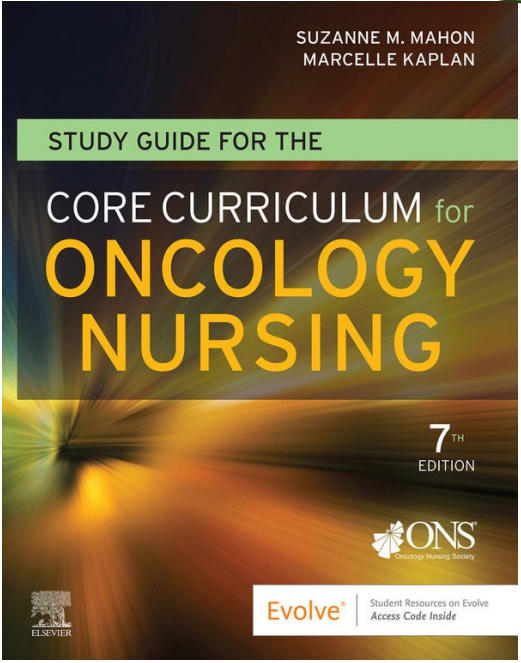
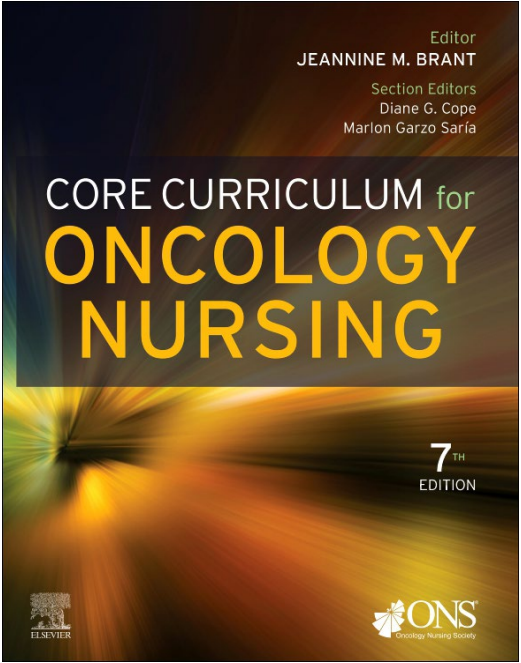
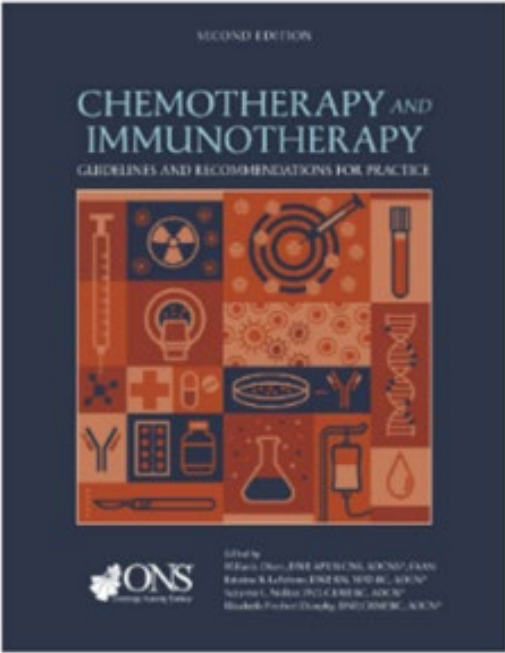
Practice Question #4

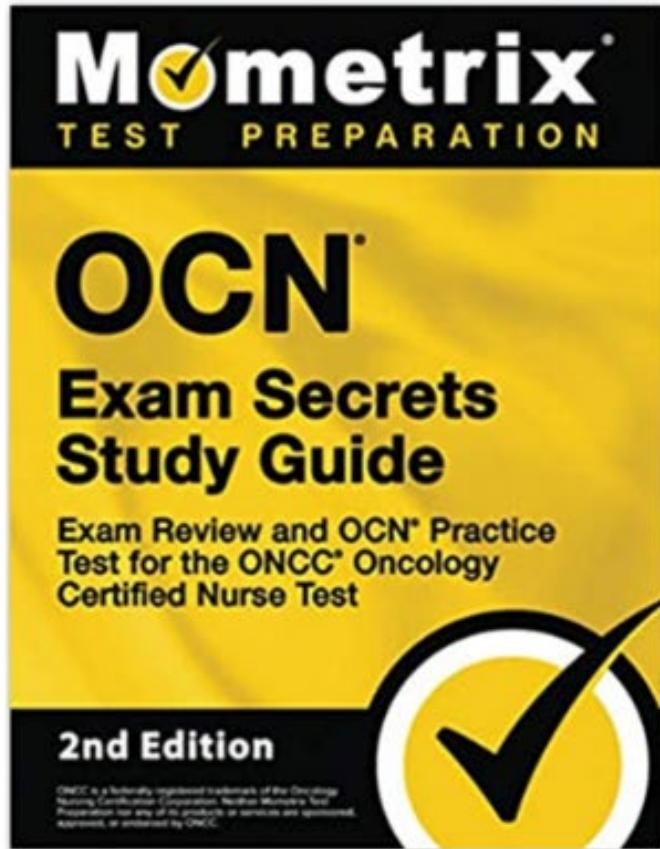
Which of the following is considered a risk factor for developing a hypersensitivity reaction?

- ~~A. Male gender~~
- ~~B. No known medication allergies~~
- ~~C. First exposure to a medication~~
- D. Intravenous route



New in May 2024





- ✔ Includes Practice Test Questions
- ✔ Fast Free Shipping
- ✔ Instant eBook Access Available

**You can't lose with our 100%,
ironclad, moneyback guarantee**

Order *Secrets of the ONCC Certification Exams* entirely at our risk. When you order from this site, it comes with a risk-free, 1-year 100% money-back guarantee. There's NO RISK on your part.

If you don't like this comprehensive book for ANY reason, you can return it for a 100% refund of the product price. You're free to return it at any time, for any reason, up to one year after the purchase date, no hassle, no questions asked.

Don't decide now if the product is for you. Just get it and try it out. If it doesn't do everything we say and more, if you don't save time, money, and frustration, if it isn't what you thought it was, if it doesn't work for you, you have nothing to worry about when you order from this site because you can get every dime of your money back under the no-loopholes guarantee. There's nothing to lose and everything to gain.

[Study Guide & Practice Test for ONCC Exams \[Prepare for the ONCC Test\]
\(mometrix.com\)](https://www.mometrix.com)

✓ **Thorough Explanations**

Become a better doctor with answer explanations that enable you to master the material.

✓ **Do better on your exams with answers.**

Questions and teaching points are continuously updated.

✓ **Test Exams & Unlimited Quizzes**

Assess where your strong and generate practices questions where you're weak.

✓ **Performance Reports**

Actionable intelligence on where to improve.

Our question bank for the Oncology Nurse Certification Exam covers four Cognitive Difficulty Levels:



Ace The Oncology Nurse Certification Exam

Be prepared for the Oncology Nursing Certification Corporation® with 677 Questions that our experts have selected to simulate the real exam.

100% Money Back Guarantee

Feedback from thousands of users proves our Q-Bank will help you excel on your exam. Use the Q-Banks and if you don't pass, we will refund 100% of your fee. What do you have to lose?

Today's Attendees are offered a 25% discount off of Statpearls using the code: **ONC25 at checkout**

[Nurse-Oncology \(OCN\) \(statpearls.com\)](https://www.statpearls.com)

ONS COURSES

[INTRODUCTION TO EVIDENCE-BASED PRACTICE*](#)

[ADVANCED AND METASTATIC UROTHELIAL CANCER ADVANCED TREATMENT OPTIONS CASE STUDY *](#)

[GENOMIC FOUNDATIONS FOR PRECISION ONCOLOGY](#)

[INTRODUCTION TO NUTRITION IN CANCER CARE*](#)

[NURSING CONSIDERATIONS FOR CAR T-CELL THERAPY FOR PATIENTS WITH HEMATOLOGIC MALIGNANCIES: PATIENT EDUCATION AND SYMPTOM MANAGEMENT*](#)

[CONSIDERATIONS FOR METASTATIC COLORECTAL CANCER: DIAGNOSIS AND TREATMENT*](#)

*FREE TO MEMBERS

ONCOLOGY NURSING PODCASTS EPISODES

Listen on iTunes: <https://itunes.apple.com/us/podcast/the-oncology-nursing-podcast/id1298224806?mt=2>

Listen on Google Play:

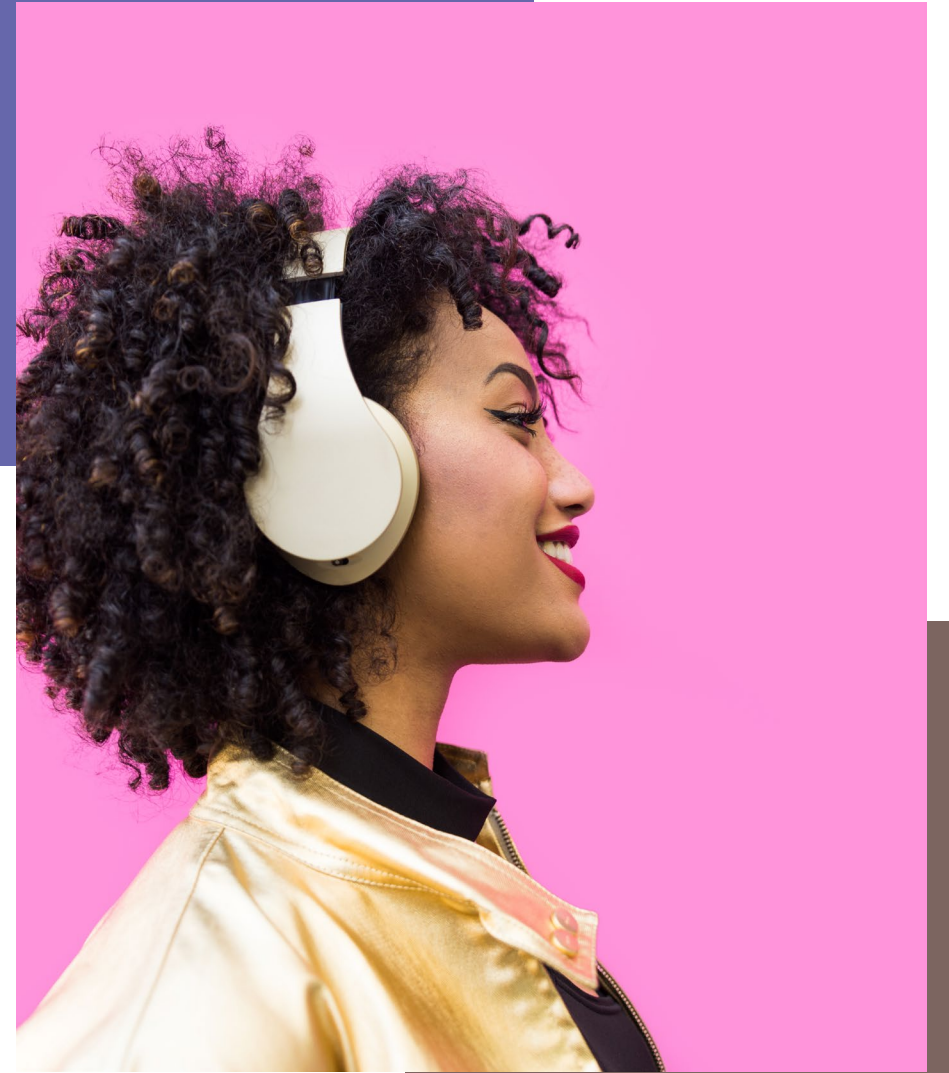
[https://play.google.com/music/listen?t=The Oncology Nursing Podcast&u=0&view=/ps/lqquy3kdtog2ju76jdv3r4m7jni](https://play.google.com/music/listen?t=The_Oncology_Nursing_Podcast&u=0&view=/ps/lqquy3kdtog2ju76jdv3r4m7jni)

Listen on Stitcher:

<https://www.stitcher.com/podcast/oncology-nursing-podcast/the-oncology-nursing-podcast>

Listen on Spotify:

https://open.spotify.com/show/3Q58Ulo86qXLKJUJgwQruu?si=jN7IK1OUT-6WxILTK3j_UA



PODCASTS

(EXAMPLES OF EPISODES)



- Episode 196: Oncologic Emergencies 101: Bleeding and Thrombosis
- Episode 195: Exercise's Effect on Patient and Provider Well-Being
- Episode 193: How Social Determinants of Health Affect Cardio-Oncology Survivorship
- Episode 192: Oncologic Emergencies 101: Hypercalcemia of Malignancy
- Episode 191: Explore Orientation Opportunities for New-to-Practice Nurses
- Episode 190: The Environment, Cancer, and Nurses' Role in Advocating for Climate Change
- Episode 188: Oncology Nurse Entrepreneurs Are Innovating Beyond the Bedside
- Episode 187: The Critical Need for Well-Being and Resiliency and How to Practice

STAR WARS™
MAY THE 4TH
BE WITH YOU



BOSTON
CHAPTER





**BOSTON
CHAPTER**



**Boston ONS is bringing
you takeaways from**



**at our Half-Day Seminar &
Vendor Fair on Saturday
June 8th, 2024**

at Boston Marriott Newton

**7am-2pm
4 cne/ncpd**